

REVIEW

Open Access



A systematic review of the profile and density of the maternal and child health workforce in China

Huan Zhang^{1*} , Xiaoyun Liu², Loveday Penn-Kekana¹ and Carine Ronsmans¹

Abstract

Background: To track progress in maternal and child health (MCH), understanding the health workforce is important. This study seeks to systematically review evidence on the profile and density of MCH workers in China.

Methods: We searched 6 English and 2 Chinese databases for studies published between 1 October 1949 and 20 July 2020. We included studies that reported on the level of education or the certification status of all the MCH workers in one or more health facilities and studies reporting the density of MCH workers per 100 000 population or per 1000 births. MCH workers were defined as those who provided MCH services in mainland China and had been trained formally or informally.

Results: Meta-analysis of 35 studies found that only two-thirds of obstetricians and paediatricians (67%, 95% CI: 59.6–74.3%) had a bachelor or higher degree. This proportion was lower in primary-level facilities (28% (1.5–53.9%)). For nurses involved in MCH care the proportions with a bachelor or higher degree were lower (20.0% (12.0–30.0%) in any health facility and 1% (0.0–5.0%) in primary care facilities). Based on 18 studies, the average density of MCH doctors and nurses was 11.8 (95% CI: 7.5–16.2) and 11.4 (7.6–15.2) per 100 000 population, respectively. The average density of obstetricians was 9.0 (7.9–10.2) per 1000 births and that of obstetric nurses 16.0 (14.8–17.2) per 1000 births. The density of MCH workers is much higher than what has been recommended internationally (three doctors and 20 midwives per 3600 births).

Conclusions: Our review suggests that the high density of MCH workers in China is achieved through a mix of workers with high and low educational profiles. Many workers labelled as “obstetricians” or “paediatrician” have lower qualifications than expected. China compensates for these low educational levels through task-shifting, in-service training and supervision.

Keywords: Human resources for health, Maternal and child health, China, Systematic review

Background

Maternal and child mortality levels have fallen substantially in China since the Liberation in 1949. China's maternal mortality ratio was estimated to be around 1500 deaths per 100 000 live births in 1950 [1], dropping to

17.8 in 2019 [2]. The under-five mortality rate dropped from 210.7 to 7.8 deaths per 1000 live births over the same period [1, 2]. Investment in health systems has no doubt accelerated the progress in reducing maternal and child mortality [3, 4]. Key to this success has been the training and deployment of maternal and child health (MCH) workers, which are seen as the cornerstone of successful MCH programmes [5]. Understanding who they are, and how many (per unit of population), is critical to the planning of such services.

*Correspondence: huan.zhang@lshtm.ac.uk

¹ Department of Infectious Disease Epidemiology, London School of Hygiene and Tropical Medicine, WC1E 7HT London, United Kingdom
Full list of author information is available at the end of the article



© The Author(s) 2021. **Open Access** This article is licensed under a Creative Commons Attribution 4.0 International License, which permits use, sharing, adaptation, distribution and reproduction in any medium or format, as long as you give appropriate credit to the original author(s) and the source, provide a link to the Creative Commons licence, and indicate if changes were made. The images or other third party material in this article are included in the article's Creative Commons licence, unless indicated otherwise in a credit line to the material. If material is not included in the article's Creative Commons licence and your intended use is not permitted by statutory regulation or exceeds the permitted use, you will need to obtain permission directly from the copyright holder. To view a copy of this licence, visit <http://creativecommons.org/licenses/by/4.0/>. The Creative Commons Public Domain Dedication waiver (<http://creativecommons.org/publicdomain/zero/1.0/>) applies to the data made available in this article, unless otherwise stated in a credit line to the data.

Defining what constitutes an “MCH worker”, and what their qualifications should be, remains a challenge internationally as well as in China. A joint report issued by the World Health Organization (WHO) and the United Nations Population Fund, defined sexual, reproductive, maternal, newborn and adolescent health workers as those including but not limited to “midwives, nurses, nurse-midwives, general practitioners, specialist doctors (such as obstetrician/gynaecologist, neonatologists, paediatricians), auxiliary staff, community health workers, and support workers (including traditional birth attendants)” [6]. The joint report did not define the health workers by cadre, and advised national workforce assessments to categorize health workers according to the cadre titles used in their own country. However, the full complexity and dynamics of the MCH workforce within each country is difficult to capture. So far, most of the research in this area has focused on the definition and measurement of particular cadres of MCH workers, e.g. midwives or paediatricians, not the entire workforce [7–12]. The WHO, for example, has recently updated its definition of a skilled birth attendant [13], but that definition does not necessarily help with human resource planning, since the criteria used are not well aligned with in-country training or qualification systems.

In China, there is no consensus on what constitutes an MCH worker. The health system allows extensive variation in education, roles and responsibilities between health workers, and definitions vary over time and between geographical locations [14]. Terms such as “obstetrician” or “paediatrician” are used loosely, and there is no standard definition. To our knowledge, there has not been a comprehensive assessment of the profile of MCH workers in China.

Education level, health-related discipline and certification are most commonly used to understand the profile of health workers in China [14–16]. Education levels generally move from primary or middle school to high school or secondary technical school, junior college, Bachelor’s degree, Master’s degree, and Doctoral degree [14]. The length of medical training varies between different disciplines, ranging from three to eight years. The tracking of health-related disciplines is also important, because China’s educational reforms in 1998 redesigned medical training from the former Soviet model, which was based on empirical clinical training to a Western model, where categorizations are based on disciplines from the natural sciences [15]. Certification, and in particular the “MCH care certificate” (*Muying baojian jishu hegezhen*, thereafter referred to as certification), is critical in allowing MCH workers to perform certain duties. All MCH workers who are directly involved in prenatal diagnosis, delivery care and termination of pregnancy

need to be certified by law to be allowed to perform these tasks [17]. To be eligible for a certificate, applicants need to have graduated from secondary technical schools or higher education and hold a valid medical doctor, nurse/midwife, or medical technician license. Candidates are certified by county-level or higher-level health authorities after passing a theoretical and skill examination, which is regulated by National Health and Family Planning Commission (previously the Ministry of Health).

The density of health workers is widely used as an indicator of health systems inputs [18, 19]. The Chinese government uses the “density of doctors per 1000 population” as a performance indicator, but there is very little information on the density of MCH workers. Work within the MCH field has suggested that the total population may not accurately reflect the obstetric or paediatric needs of a population. Maternal health worker density, for example, should be expressed over total number of births, while child health worker density should be counted per number of children [20–22]. This is particularly relevant for China since fertility rates are low [23]. Using births as the reference population, the World Health Report 2005 suggested a minimum requirement of 20 midwives or 3 doctors (at least part time) per 3600 births per year to ensure essential maternal and newborn care [24].

The lack of information on the profile and density of MCH workers in China greatly restricts evidence-informed policy making to address potential workforce issues. The aim of this study is to systematically review the literature reporting on the profile and density of MCH workers in mainland China.

Methods

Search strategy

We combined three search terms ‘human resources for health’, ‘MCH services’, and ‘China’ with both thesaurus and free-text words [see Additional file 1 for the full search strategy]. We searched six English databases (EMBASE, MEDLINE, The Cochrane Central Register of Controlled Trials, EconLit, Global Health and Web of Science) and two Chinese databases (China National Knowledge Infrastructure [CNKI] and Wanfang) with no limitation on language. We searched the literature between October 1, 1949 (founding of the People’s Republic of China), and July 20, 2020. We combined the search results and removed duplicate studies.

Study selection

We screened studies based on information in their titles and abstracts. All potentially relevant studies were retrieved for the full texts and reviewed for inclusion. Studies were eligible for inclusion if they reported

on MCH workers active in any aspect of MCH care from pregnancy to childhood, including antenatal care, childbirth care, postnatal care, care during infancy and care for children under five. MCH workers were defined as those who provided MCH services in mainland China and had been trained formally or informally. The services could be either preventive or curative: for example, vaccination or prescribing medication for diarrhoea. The studies could be peer-reviewed articles (English/Chinese) or Chinese Masters or Doctoral theses. We did not add reports published by the Chinese government such as the Health Statistics Yearbook, the National Health Survey Report, the National Survey of Health Resources and Medical Services, because these reports do not provide the profile, or the total count or the density of any cadre of MCH workers within a defined geographic area. Studies were excluded if published as conference abstract, poster or editorial.

For studies reporting on MCH workers' profile, we included facility-based as well as population-based data, adding the following inclusion criteria: (1) studies needed to be based on a census or a sample of one or more cadres of MCH workers either from communities or from one or multiple units within one or multiple health facilities. Health facilities were defined as hospitals, health centres or clinics. (2) Reporting the numbers of at least one cadre of MCH workers, broken down by the level of education, health-related discipline or certification.

For studies reporting on the density of MCH workers, we only included population-based data, adding the following inclusion criteria: (1) the numerator was the whole count of any cadre of MCH workers in a population in a given geographical area, either from a population census with health occupation data, or from a health workforce survey with application of a sampling weight to calibrate for population representation. The denominator was either total population or specific subgroups such as total number of women, children or births for the same geographical area. (2) The studies either reported the density of any cadre of MCH workers directly or reported both the numerator and the denominator allowing us to calculate the density of MCH workers.

Data extraction

We used a standard data extraction form in Excel to extract the following information: study source; study setting; data collection methods; MCH worker cadre and definition; MCH worker profile; MCH worker density. We compared author names, study setting, sampling methods, and time of study to detect duplicate studies.

Risk of bias assessment

We used the component approach outlined in the Cochrane Handbook to assess the risk of bias of eligible studies [25]. We assessed the rigour of the study design (e.g. whether the sampling strategy for a survey was clearly described), the definition of the MCH workers and the completeness of data. We classified studies as having a low risk or high risk or unclear risk of bias. For example, a study was classified as having high risk of bias for study design if a cross-sectional survey in a single facility was claimed to be based on random sampling of MCH workers without information on the units from which the workers were sampled. The risk of bias was deemed to be unclear if the authors did not report the information for the above criteria.

Data analysis

Profile of MCH workers

We grouped the education levels into three categories: bachelor or higher-level degree, junior college education, and secondary technical school or lower-level education. We categorized health facilities into three levels: tertiary (provincial- or municipal-level facilities), secondary (county-level facilities), and primary level (community health centres, township hospitals, village clinics).

We combined proportions of MCH workers by each education level using meta-analysis. To generate confidence intervals within admissible values, we used Clopper–Pearson exact method to compute the study specific confidence intervals. We performed the Freeman–Tukey double-arcsine transformation method to compute the weighted pooled estimates. In the subgroup meta-analyses, studies were stratified by level of health facility (tertiary/secondary/primary). Due to the variation between study characteristics, we used random-effects models in the meta-analysis to pool the proportions by each education level, presenting forest plots. We inspected I^2 values and p values from the test of heterogeneity to assess evidence of between-study variation in the individual proportion estimates not due to random variation.

Density of MCH workers

For studies using total population as denominator, we converted the units of the density of MCH workers to per 100 000 population and presented the density by detailed cadre using forest plots. For studies using number of births as denominator, we summarized the studies in a forest plot. The method for the meta-analysis of density was exactly the same as what we did for the analysis on education level. Where data were

available, we calculated the ratio of maternal health workers to child health workers or the ratio of doctors to nurses within individual studies.

All statistical analyses were performed using STATA (Version 14: Stata Corp).

Results

Description of the included studies

Figure 1 shows the results of the study search and selection. The database search identified 4999 English references and 27 256 Chinese references. After removing duplicates, 3392 English references and 25 958 Chinese references were excluded through title and abstract screening. We could not trace the full texts of 11 potentially relevant studies. Of the 178 English studies and 371 Chinese studies reviewed in full text, 48 studies were included. We reviewed the automatic

e-mail updates of search results on a weekly basis until July 20, 2020, and added two English articles. We finally included a total of 50 studies: 35 reporting on MCH workforce profiles [16, 26–62], 18 reporting on the MCH workforce density [16, 53, 61, 63–77] and three covering both [16, 53, 61]. Most studies were peer-reviewed articles ($n = 39$, 78.0%) while the remaining were from Masters these ($n = 11$, 22.0%).

Quality of included studies

For studies reporting on MCH workers’ profile, only eight were judged to be at low risk of bias across all the domains in the risk of bias assessment [33–35, 46, 48–50, 57]. For studies on MCH workforce’s density, all were judged to have unclear risk of bias [see Additional file 2 for quality assessment results].

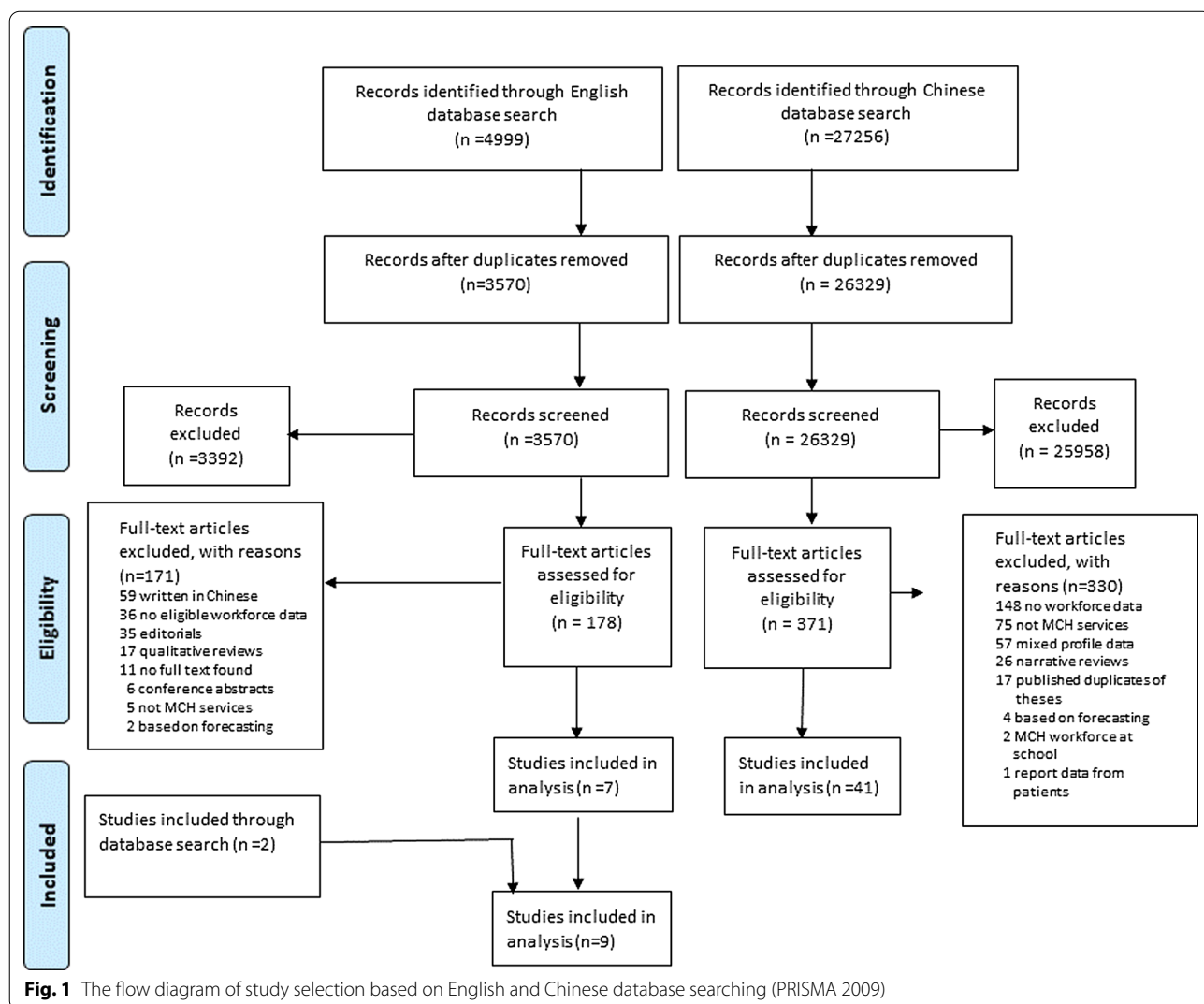


Fig. 1 The flow diagram of study selection based on English and Chinese database searching (PRISMA 2009)

Studies reporting the profile of MCH workers

Study characteristics

Of the 35 studies, 33 (94.3%) were done after 1990, and 32 (91.4%) were done within a single province. Only one study was nationally representative, reporting on the education level of maternal and child health workers separately [16]. The MCH workforce in China covers an array of cadres, including obstetricians, gynaecologists, paediatricians, nurses, midwives, general practitioners, specialized public health workers, vaccinators, barefoot doctors, and traditional birth attendants [see Additional file 3]. Only two studies provided information on the certification held by MCH workers.

Education level

Education level was reported in nearly all the studies ($n=34$, 97.1%). In the meta-analysis, the weighted average proportions of doctors having bachelor degree or above, junior college education, and secondary technical school or below were 67.0% (95% CI: 59.6–74.3%), 23.0% (10.0–40.0%), and 14.0% (5.0–28.0%), respectively (Table 1). The total was not exactly 100% because not all studies contributed data to each of the three categories. For example, a study may solely report the proportion of doctors holding bachelor degree or above and the aggregate proportion of junior college education

or below, contributing only to the meta-analysis of the proportion of bachelor degree or above. For nurses, the estimated proportions were 20.0% (12.0–30.0%), 46.4% (41.2–51.5%) and 33.1% (24.2–41.9%), respectively. For other cadres, the estimated proportions were 18.0% (5.0–36.0%), 18.0% (6.0–34.0%) and 71.0% (46.0–91.0%), respectively.

Subgroup meta-analyses stratified by facility level showed that lower-level health facilities had lower proportions of MCH workers with bachelor or higher-level degrees (Table 1). Subgroup meta-analyses lowered the I^2 statistics for almost all the groups. For doctors, the pooled weighted average proportion of having bachelor or higher-level degrees was 27.7% (1.5–53.9%) at primary-level facilities (Fig. 2). The proportion for nurses was 1.0% (0.0–5.0%), while that for other cadres was 3.0% (0.0–12.0%) [see Additional file 4 for the full set of forest plots].

Health-related discipline

Twelve studies provided information on MCH workers' health-related discipline (Table 2) [34, 46–50, 53, 55–59]. The one study reporting on paediatricians suggested that they had all studied clinical medicine whilst obstetricians and gynaecologist had degrees from either “Clinical

Table 1 Meta-analyses of the proportion of education level, stratified by cadre and level of facility

	Bachelor or above		Junior college		Secondary technical school or below	
	Proportion, %	I^2 , %	Proportion, %	I^2 , %	Proportion, %	I^2 , %
Doctor						
Primary	27.7 (1.5–53.9)	97.2	47.0 (42.0–51.0)	89.8	41.0 (37.0–46.0)	98.7
Secondary	61.3 (31.7–90.9)	99.6	32.0 (10.0–59.0)	99.3	8.0 (1.0–20.0)	98.1
Tertiary	97.4 (94.9–100.0)	92.3	0.0 (0.0–2.0)	0.0	0.0 (0.0–1.0)	0.0
Mixed	65.1 (54.9–75.3)	99.7	29.0 (9.0–55.0)	99.1	34.0 (20.0–50.0)	96.1
Overall	67.0 (59.6–74.3)	99.8	23.0 (10.0–40.0)	99.6	14.0 (5.0–28.0)	99.1
Nurse						
Primary	1.0 (0.0–5.0)	–	40.0 (30.3–49.7)	–	59.0 (49.3–68.8)	–
Secondary	4.0 (2.7–5.3)	53.8	44.9 (35.4–54.4)	94.8	51.0 (42.9–59.2)	92.9
Tertiary	34.0 (20.9–50.0)	99.3	50.4 (38.5–62.2)	98.0	23.7 (7.8–39.6)	99.2
Mixed	20.0 (9.0–33.0)	99.9	44.6 (38.0–51.1)	96.4	31.0 (20.1–42.0)	99.2
Overall	20.0 (12.0–30.0)	99.8	46.4 (41.2–51.5)	97.6	33.1 (24.2–41.9)	99.4
Other cadres						
Primary	3.0 (0.0–12.0)	96.4	11.1 (1.0–29.0)	98.1	83.0 (51.0–100.0)	99.7
Secondary	10.0 (3.0–19.0)	44.5	44.0 (37.0–52.0)	43.7	47.0 (32.0–62.0)	75.4
Tertiary	77.0 (58.0–91.0)	69.9	50.0 (18.7–81.3)	–	–	–
Mixed	63.0 (38.0–85.0)	97.1	15.5 (10.2–22.2)	–	29.0 (23.0–35.0)	98.6
Overall	18.0 (5.0–36.0)	99.4	18.0 (6.0–34.0)	98.7	71.0 (46.0–91.0)	99.7

– indicates statistics cannot be calculated, due either to no observation or only one study included

All the p values from the test of heterogeneity between groups are less than 0.001

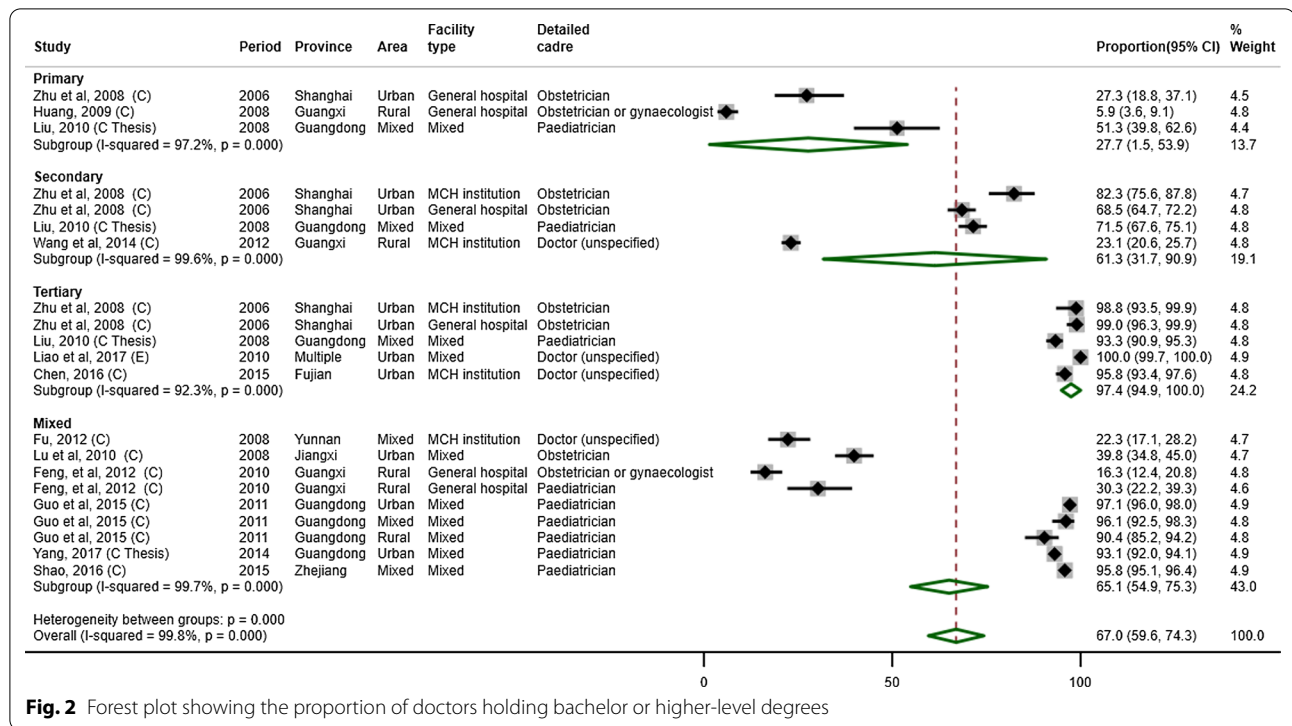


Fig. 2 Forest plot showing the proportion of doctors holding bachelor or higher-level degrees

Table 2 Health-related discipline training received by MCH workers

Cadre (number of studies)	Health-related discipline
Obstetrician or gynaecologist (1)	Clinical medicine, Maternal and child healthcare
Paediatrician (1)	Clinical medicine
Nurse (1)	Nursing
Midwife (3)	Midwifery, Nursing, Clinical medicine
Specialized public health worker (3)	Clinical medicine, Nursing, Public health, Auxiliary medicine, Maternal and child healthcare
Vaccinator (2)	Clinical medicine, Traditional Chinese medicine, Nursing, Midwifery, Public health, Non-medical specialty
Health information worker (1)	Clinical medicine, Nursing, Health sciences, Computer sciences
Maternal health worker (1)	Nursing, Midwifery, Maternal and child healthcare, Clinical medicine

The total number of studies exceeds 12 because two studies provide information for different cadres of MCH workers

medicine” or “Maternal and child health” (a subarea of “Public health”).

Certification

Only two studies provided information on MCH workers’ certification. One study in 2013 reported that only half (52.4%, 714 out of 1364) of the MCH workers from Chongqing held valid certification [62]. Among the other half of the MCH workers, 37.5% were incorrectly certified not for the role in which they worked, and 10.1% provided MCH services without holding any certification. Similarly, another study surveyed all the obstetricians, obstetric nurses and midwives from township hospitals

in Baise city, Guangxi, in 2008, finding that, respectively, 7.5% (24 out of 321 obstetricians), 68.5% (102 out of 149 obstetric nurses) and 4.7% (2 out of 43 midwives) of the MCH workers did not hold any certificate [33].

Studies reporting the density of MCH workers

Study characteristics

The included studies are summarized by cadre [Additional file 5]. Of the 18 studies on density, 17 (94.4%) were done after 1990, and 5 (27.8%) were nationally representative [16, 63, 64, 72, 76]. The single-province studies included Zhejiang (n = 3), Anhui (n = 2), Guangdong

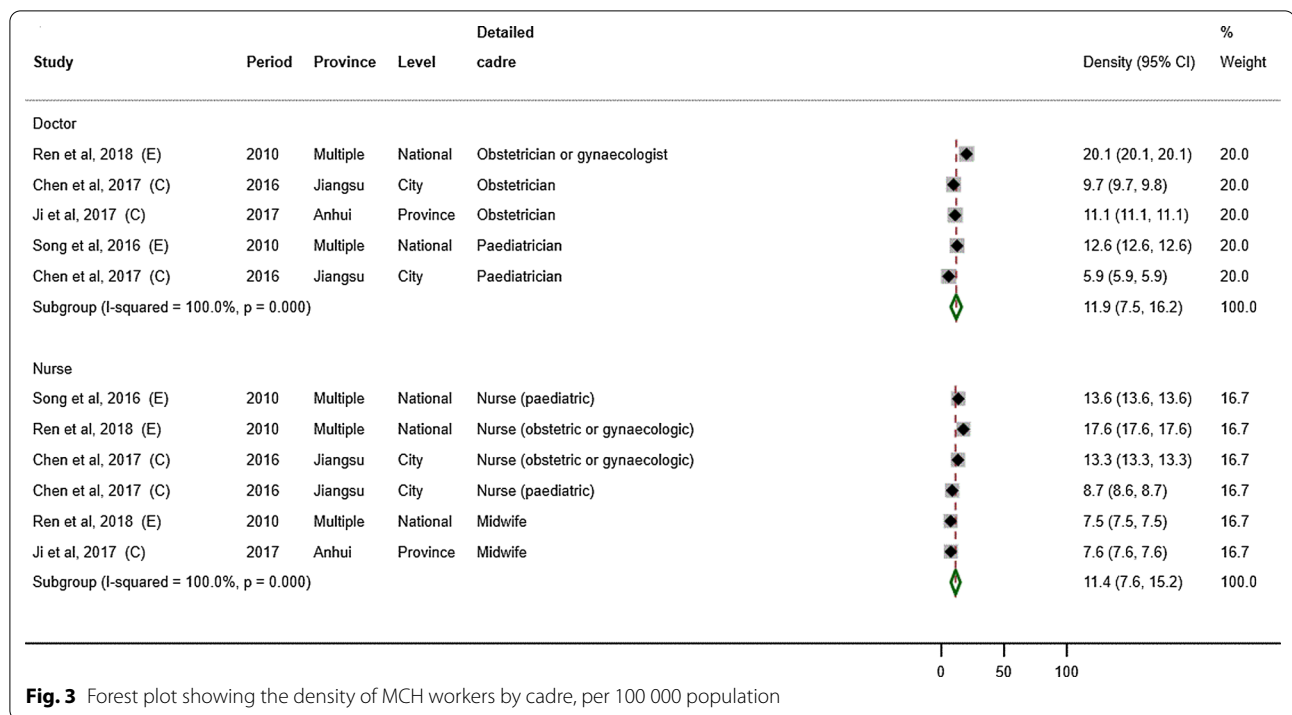


Fig. 3 Forest plot showing the density of MCH workers by cadre, per 100 000 population

(*n* = 2), Yunnan (*n* = 2), Shanghai (*n* = 1), Jiangsu (*n* = 1), Xinjiang (*n* = 1), and Liaoning (*n* = 1).

Density by cadre

For studies using total population as the denominator (Fig. 3), the weighted average density of MCH doctors was 11.9 (95% CI: 7.5–16.2) per 100 000 population (*n* = 5) and that of MCH nurses was 11.4 (7.6–15.2) (*n* = 6). For studies using number of births as the denominator (Fig. 4), the weighted average density of

obstetricians was 9.0 (95% CI: 7.9–10.2) per 1000 births (*n* = 3) and that of obstetric nurses was 16.0 (14.8–17.2) per 1000 births (*n* = 2).

Ratios of MCH workers

Three studies allowed us to calculate the ratio of maternal to child health workers (Fig. 5). The density of the maternal health workers was between 1.6 and 6.5 times higher than the density of child health workers. Six studies allowed us to calculate the ratio of MCH nurse density to

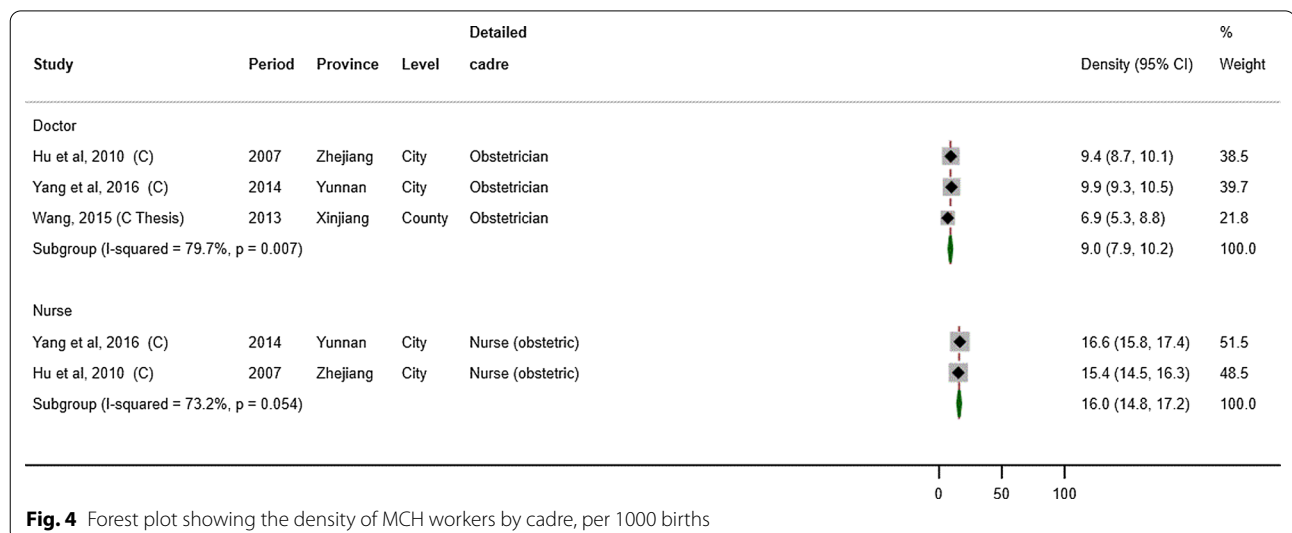


Fig. 4 Forest plot showing the density of MCH workers by cadre, per 1000 births

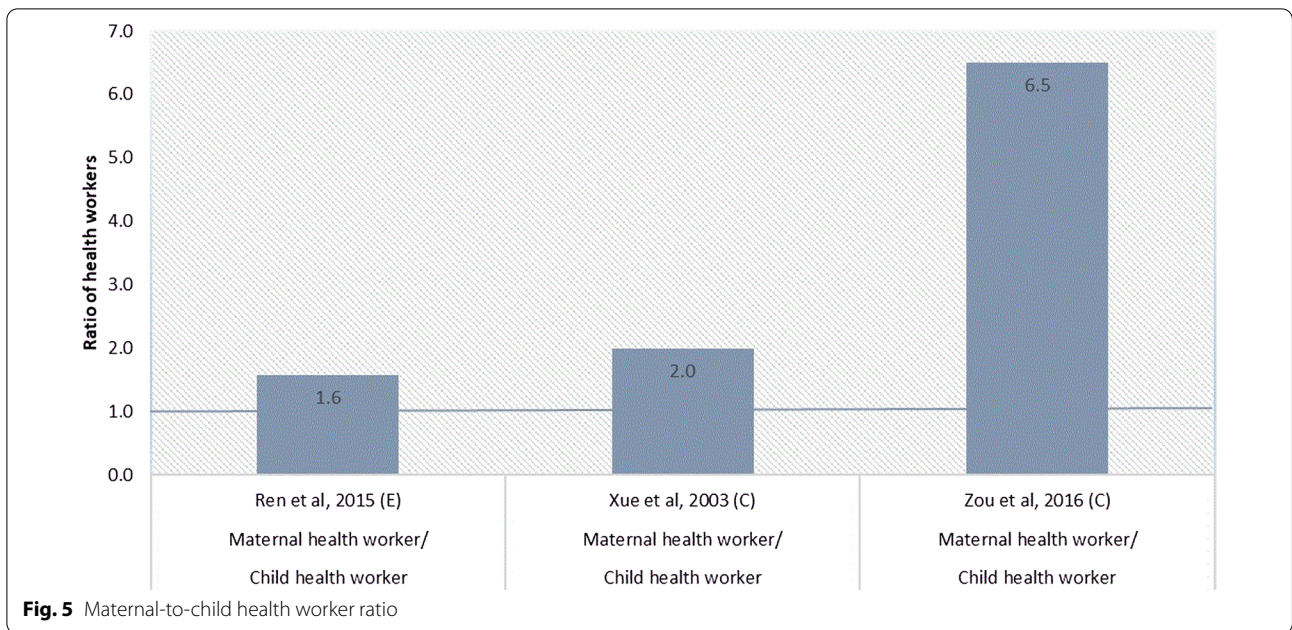


Fig. 5 Maternal-to-child health worker ratio

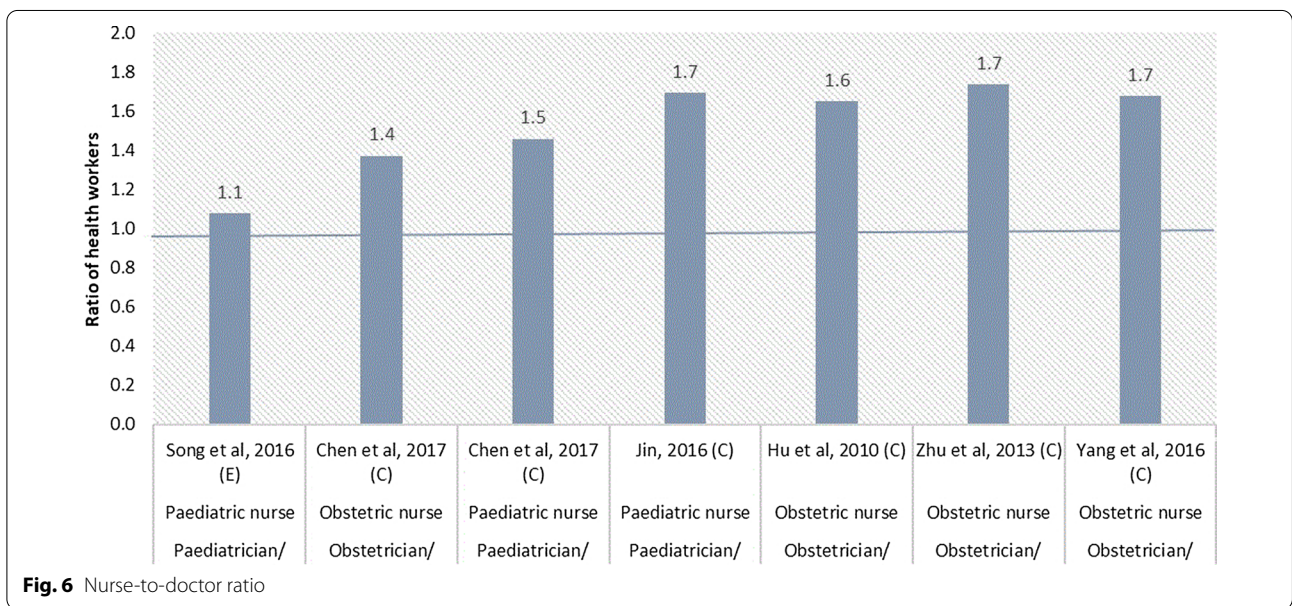


Fig. 6 Nurse-to-doctor ratio

MCH doctor density (Fig. 6). The ratio of obstetric nurses to obstetricians ranged from 1.4:1 to 1.7:1. The ratio of paediatric nurses to paediatricians ranged from 1.1:1 to 1.7:1.

Discussion

The aim of the review was to describe the profile and density of MCH workers in China and to help understand how the MCH workforce development contributes to China’s achievement in MCH. The study has three

main findings. First, only two-thirds of obstetricians and paediatricians had a bachelor or higher degree. This proportion was lower in primary-level facilities (28%). For nurses involved in MCH care the proportions with a bachelor or higher degree were lower (20.0% in any health facility and 1% in primary care facilities). Second, the proportions of MCH workers who held a certificate—a rigorous system introduced by the Chinese Government to regulate who can perform MCH tasks—ranged from 32% (47 of 149 obstetric nurses) to 95% (41 out of

43 midwives) in primary care facilities. Third, the average density of obstetricians was 9.0 (7.9–10.2) per 1000 births and that of obstetric nurses 16.0 (14.8–17.2) per 1000 births. The density of MCH workers is much higher than what has been recommended internationally (three doctors and 20 midwives per 3600 births).

Obstetricians, paediatricians and other MCH worker cadres were much less educated at the primary level than at the tertiary level. That is partly because most medical school graduates in China compete to join large hospitals, where their salaries, working conditions and career opportunities are superior to those offered by primary-level health facilities [78]. The mobility rate of experienced and qualified health workers in primary-level health facilities is high [79]. The lower capacity of MCH workers at the primary level is also seen in other low- and -middle-income countries (LMICs). China's strategy has been to achieve widespread deployment of the workforce first and then to upgrade the skills of the providers to improve the standard of care gradually. Such strategy contributed to the higher density of obstetricians and obstetric nurses as compared to the international benchmark. Similar strategies are also seen in the expansion of the insurance schemes, where universal health insurance coverage is achieved first and an improvement of the benefit package follows [80].

Although the education level of MCH workers is variable, China achieved near-universal access to childbirth in health facilities with low maternal mortality and neonatal mortality as a result [3, 81]. Childbirth is now concentrated in well-staffed hospitals at secondary and tertiary levels, whereas primary-level facilities focus on antenatal care and screening of high-risk pregnancies [3]. Concentrating births in large facilities facilitates an efficient and effective midwifery and obstetric skill mix, with providers being highly trained and equipped to ensure safe birth. The government no longer allows caesarean sections to be provided at township hospitals, where maternal health workers now focus on home visits, birth preparedness, and postpartum follow-up. In addition, accredited obstetricians from tertiary facilities regularly visit secondary or primary-level facilities to provide in-service training and supervision [3]. Evidence from other countries has shown that some MCH tasks do not require advanced skills and health workers with no advanced training can perform well provided that they get supervision from higher-level facilities [82]. Another example is immunization, which is not a complex intervention. Although primary-level facilities are poorly staffed for highly medicalized services, immunization is offered largely at primary care level. In rural areas, immunization is actively promoted by village doctors, who only have basic levels of education.

Certification of MCH workers is an important strategy to ensure that particular tasks are only performed by those skilled and equipped to do so [83, 84]. We found that not all MCH workers held a valid certificate. The finding does not necessarily imply that this is a failure of certification mechanism. Health facilities are required to comply with the regulations relating to certification of MCH workers. But there is a lack of information on the degree of compliance of health facilities with the regulations. It could be partly due to the fact that limited resources have been put in place to enforce the certification law. Although rare evidence exists, this problem might also occur in private hospitals, which are often less regulated.

Our study has found that for density of MCH workers, the population denominator has been used more often than birth denominator. The weighted average density of MCH doctors reported in our study (11.9 per 100 000 population) was similar to that in Sweden and France in 2012—12.1 and 12.3, respectively [85]. However, fertility in these countries is higher than in China, so comparisons may not be valid. We echo Gabrysch and colleagues' recommendations about the need to enhance discriminatory power of density indicators and measure density of different cadres of MCH workers according to specific demographic profile, for example, define density of obstetricians using per births instead of per population [20].

Through the analysis of MCH worker ratio, we found a larger maternal health workforce than child health workforce, and more nurses than doctors. Although no gold standard exists for the ratio of maternal to child health workers, the shortage of child health workers in China has been a long concern. Paediatrics is not a popular choice for medical students due to the heavy workload, low salary compared with other medical professions and intense doctor–patient relationships [86]. The revealed deficit in the availability of child health workers needs to be addressed through implementing targeted human resource policies, such as through the salary and bonus systems or improved working conditions. Compared with the optimal 2:1 nurse-to-doctor ratio as recommended by WHO [19], the nurse-to-doctor ratio in MCH area was less than optimal. China has a long history of having a low nurse-to-doctor ratio. The nurse-to-doctor ratio was estimated around 1:10 in the early 1950s (WHO, 2015) [87]. The situation was reversed with an estimated nurse-to-doctor ratio of 1.1:1 in 2019 [88]. China still needs to step up its training of nurses to perform the MCH services.

In the era of SDGs, many countries address MCH workforce challenges through task-shifting and creating cadres capable of providing antenatal care,

intrapartum care, postpartum care and paediatric care [89]. It is necessary to look at the MCH workforce as a whole in-country systems to complement to the measurement of particular cadres of MCH workers. While the presented MCH workforce analysis was confined to mainland China, the analysis we have done is likely to apply to many LMICs which do not apply international training standards, e.g. Vietnam, Myanmar and Zambia [90]. As countries try to address MCH workforce gaps, reliable and up-to-date information on the profile and density of MCH workers is urgently needed for evidence-based policy making. This calls for improved methods in future primary data collection, including clear definitions of MCH workers and robust measurement of MCH workforce density.

Our study has several limitations. First, we found no studies reporting on the private sectors, where the profile of MCH workers may be different from those working in the public sector. Second, we only focused on the length of education without analysing the content of training, so we did not assess the skills of the MCH workers. Third, we did not separate the data by year for the meta-analysis because that would result in too few studies for each cadre and each subgroup. Given that 94% of the included studies were done after 1990 and health workforce usually takes a decade or a generation to develop [91], the difference in time period was unlikely to change the results. Fourth, there were relatively too few studies contributing to each subgroup (less than 10 studies). Subgroup proportions need to be interpreted with uncertainty. Fifth, there could be some mis-reporting given the methods used to report on MCH workers. Last, the quality of the included studies needs careful scrutiny, because there is unclear and high risk of bias in almost all studies.

Conclusion

The high density of MCH workers in China is achieved through a mix of workers with high and low educational profiles. Many workers labelled as “obstetricians” or “paediatrician” have lower qualifications than expected. China compensates for these low educational levels through task-shifting, in-service training and supervision. In a global context, particularly in the area of maternal and newborn health, many countries are pushing for degree-level qualification of skilled health professionals. China’s experience in training and optimizing the roles of less educated MCH workers can be further explored as a strategic option for poor-resourced settings.

Supplementary Information

The online version contains supplementary material available at <https://doi.org/10.1186/s12960-021-00662-4>.

Additional file 1. Search strategy for English and Chinese literature on China’s MCH workforce.

Additional file 2. Quality assessment of included studies.

Additional file 3. Studies reporting on MCH workforce profile: study design and density.

Additional file 4. Meta-analysis for proportions of MCH workers with different education levels.

Additional file 5. Studies reporting on MCH workforce density: study design and density.

Acknowledgements

The authors would like to thank Mengyun Liu for screening a 10% sample of abstracts. The authors would also like to acknowledge the China Medical Board [grant number: ADDE501010] for supporting Huan Zhang for her doctoral studies.

Authors’ contributions

HZ designed the systematic review under the supervision of CR. HZ conducted the analyses; wrote the first draft of this manuscript; and revised the drafts based on comments from other co-authors. XL and CR reviewed the various versions of this manuscript. LP-K provided constructive comments for this manuscript. All authors read and approved the final manuscript.

Funding

China Medical Board [Grant Number: ADDE501010].

Availability of data and materials

Data are available from the corresponding author upon request.

Declarations

Ethics approval and consent to participate

This systematic review involved data from public sources. No ethics approval was required.

Consent for publication

Not applicable.

Competing interests

The authors declare that they have no competing interests.

Author details

¹Department of Infectious Disease Epidemiology, London School of Hygiene and Tropical Medicine, WC1E 7HT London, United Kingdom. ²Peking University China Centre for Health Development Studies, Beijing, China.

Received: 25 June 2021 Accepted: 19 September 2021

Published online: 09 October 2021

References

1. UN. World population prospects, the 2010 revision. New York: UN; 2010. p. 2011.
2. The 2019 statistical report on the development of medical and health services in China <http://www.nhc.gov.cn/guihuaxxs/s10748/202006/ebfe31f24cc145b198dd730603ec4442.shtml>. Accessed 27 May 2021; in Chinese.
3. Gao Y, Zhou H, Singh NS, Powell-Jackson T, Nash S, Yang M, Guo S, Fang H, Alvarez MM, Liu X, et al. Progress and challenges in maternal health in

- western China: a Countdown to 2015 national case study. *Lancet Glob Health*. 2017;5(5):e523–36.
4. Balabanova D, Mills A, Conteh L, Akkazieva B, Banteyerga H, Dash U, Gilson L, Harmer A, Ibrahimova A, Islam Z, et al. Good Health at Low Cost 25 years on: lessons for the future of health systems strengthening. *Lancet*. 2013;381(9883):2118–33.
 5. Kerber KJ, de Graft-Johnson JE, Bhutta ZA, Okong P, Starrs A, Lawn JE. Continuum of care for maternal, newborn, and child health: from slogan to service delivery. *Lancet*. 2007;370(9595):1358–69.
 6. WHO. Conducting a sexual, reproductive, maternal, newborn and adolescent health workforce assessment: a handbook. Geneva: WHO; 2015.
 7. Bernis L, Sherratt DR, AbouZahr C, Van Lerberghe W. Skilled attendants for pregnancy, childbirth and postnatal care. *Br Med Bull*. 2003;67(1):39–57.
 8. Harvey SA, Blandón YCW, McCaw-Binns A, Sandino I, Urbina L, Rodríguez C, Gómez I, Ayabaca P, Djibrina S. Are skilled birth attendants really skilled? A measurement method, some disturbing results and a potential way forward. *Bull World Health Organ*. 2007;85:783–90.
 9. Hobbs AJ, Moller A-B, Kachikis A, Carvajal-Aguirre L, Say L, Chou D. Scoping review to identify and map the health personnel considered skilled birth attendants in low-and-middle income countries from 2000–2015. *PLoS ONE*. 2019;14(2):e0211576.
 10. Adegoke A, Utz B, Msuya SE, Van Den Broek N. Skilled Birth Attendants: who is who? A descriptive study of definitions and roles from nine Sub Saharan African countries. *PLoS ONE*. 2012;7(7):e40220.
 11. Carlough M, McCall M. Skilled birth attendance: what does it mean and how can it be measured? A clinical skills assessment of maternal and child health workers in Nepal. *Int J Gynecol Obstet*. 2005;89(2):200–8.
 12. Ariff S, Soofi SB, Sadiq K, Feroze AB, Khan S, Jafarey SN, Ali N, Bhutta ZA. Evaluation of health workforce competence in maternal and neonatal issues in public health sector of Pakistan: an assessment of their training needs. *BMC Health Serv Res*. 2010;10(1):319.
 13. WHO. Definition of skilled health personnel providing care during childbirth: the 2018 joint statement by WHO, UNFPA, UNICEF, ICM, ICN, FIGO and IPA. Geneva: World Health Organization; 2018.
 14. Anand S, Fan YY, Zhang J, Zhang L, Ke Y, Dong Z, Chen LC. China's human resources for health: quantity, quality, and distribution. *Lancet*. 2008;372(9651):1774–81.
 15. Hou J, Michaud C, Li Z, Dong Z, Sun B, Zhang J, Cao D, Wan X, Zeng C, Wei B. Transformation of the education of health professionals in China: progress and challenges. *Lancet*. 2014;384(9945):819–27.
 16. Ren Z, Song P, Theodoratou E, Guo S, An L. China's human resources for maternal and child health: a national sampling survey. *BMC Health Serv Res*. 2015;15(1):561.
 17. Standing Committee of the Eighth National People's Congress. Law of the People's Republic of China on Maternal and Infant Health Care. Beijing: Standing Committee of the Eighth National People's Congress; 1994.
 18. Anand S, Barnighausen T. Human resources and health outcomes: cross-country econometric study. *Lancet*. 2004;364(9445):1603–9.
 19. WHO. The world health report 2006: working together for health. Geneva: World Health Organization; 2006.
 20. Gabrysch S, Zanger P, Seneviratne HR, Mbewe R, Campbell OM. Tracking progress towards safe motherhood: meeting the benchmark yet missing the goal? An appeal for better use of health-system output indicators with evidence from Zambia and Sri Lanka. *Tropical Med Int Health*. 2011;16(5):627–39.
 21. Collender G, Gabrysch S, Campbell OM. Reducing maternal mortality: better monitoring, indicators and benchmarks needed to improve emergency obstetric care. Research summary for policymakers. *Trop Med Int Health*. 2012;17(6):694–6.
 22. Harper BD, Waceke Nganga RA, Forsyth KD, Ham HP, Keenan WJ, Russ CM. Where are the paediatricians? An international survey to understand the global paediatric workforce. *BMJ Paediatr Open*. 2019;3(1):e000397.
 23. National Bureau of Statistics. China statistical yearbook 2019. Beijing: China Statistics Press; 2019.
 24. WHO. The World Health Report 2005: make every mother and child count. Geneva: World Health Organization; 2005.
 25. Higgins JP, Green S. Cochrane handbook for systematic reviews of interventions. Chichester: John Wiley & Sons Ltd; 2008.
 26. Liao XP, Chipenda-Dansokho S, Lewin A, Abdelouahab N, Wei SQ. Advanced neonatal medicine in China: a national baseline database. *PLoS ONE*. 2017;12(1):e0169970.
 27. Fu J. Research on the distribution and equity of human resources in autonomous prefecture of Chuxiong. Yunnan: Kunming Medical University; 2012.
 28. Chen D. Structure analysis of human resources for health in Fujian maternal and child health center, 2010–2015. *Strait J Prev Med*. 2016;22(06):75–7.
 29. Zhu X. The talent strategy of maternal and child health hospital in Zunyi. Guizhou: Guizhou University; 2009.
 30. Xiao Y. Research on the current status and equality of health manpower resources of minority regions in Sichuan province. Chengdu: Chengdu University of Traditional Chinese Medicine; 2011.
 31. Wang X, Gao H, Liang S, Li Y, Luo H, You J, Feng Q. Study on the current situation and the equity of health human resource allocation in maternal and child health care hospitals of poor counties in Guangxi. *Matern Child Health J*. 2014;29(27):4365–7.
 32. Ding L, Liang F, Yang Y, Wang J, Ye Z, Gou P. Analysis of maternal and child healthcare in Lanzhou city, 2010–2014. *Matern Child Health J*. 2016;31(21):4345–8.
 33. Huang Z. The current status of maternal and child health workforce of township hospitals in remote ethnic area. *Matern Child Health J*. 2009;24(28):3920–2.
 34. Feng J, Huang Z, Wu W, Tang H. The status quo analysis of maternal and child health workforce in remote ethnic area, Guangxi province. *Matern Child Health J*. 2012;3(04):491–3.
 35. Lu B, Xiao H. Analysis of obstetric workforce in Nanchang. *Chin Community Doctors* 2010;12(240):243.
 36. Yao H, Qiu X, Chen L, Chen S, Huang Z, Lei L, Deng Z, Peng X. Analysis of the obstetric departments at different levels of health facilities in Guangxi. *Matern Child Health J*. 2015;30(32):5523–6.
 37. Zhu L, Jia W, Zhuang S, Tan J, Qin M, Ding Y. The status quo analysis of obstetric health workers in Shanghai and policy implications. *Matern Child Health J*. 2008;23(06):736–8.
 38. Guo Y, Xia X, Lu J, Shen S, Ma Y, Xing Y, Lin H, Yang L, Qiu X. Effect of paediatric human resource on regional infant mortality rate. *Matern Child Health J*. 2015;30(21):3551–3.
 39. Liu Y. Study on human resource development strategy of paediatric in Guangdong province. Huazhong: Huazhong University of Science & Technology; 2010.
 40. Shao Y. The current situation of paediatric health resources in Zhejiang province under the two-child policy. *Soft Sci Health*. 2016;05:295–8.
 41. Yang T. Research on evaluation of pediatric medical service ability of maternal and child health hospital in district level in Guangzhou city. Guangzhou: Guangzhou University of Chinese Medicine; 2017.
 42. Liu D. Study on the job burnout situation and its influence factors of clinical nurses in maternal and child health hospital of Hunan province. Changsha: Central South University; 2013.
 43. Sun X, Xu X, Zhang J, Zou F, Huang S, Cai W. Investigation on the allocation status of neonatology nursing human resources in China's economically developed areas. *Chin J Pract Nurs*. 2014;30(17):26–30.
 44. Zheng F. Fuzhou three level hospital pediatric clinical nursing human resource status and development countermeasure research. Fujian: Fujian Medical University; 2015.
 45. Wu X, Fang W, Hu Y, Zhang R, Yin Y, Huang G. Analysis on the personnel structure and influencing factors of wage of nurses in a children's hospital. *Chin Health Res*. 2017;20(3):230–3.
 46. Li L, Jiang H, Dan Q. Status quo analysis of midwifery staff in Leshan. *Guide China Med*. 2014;12(36):398–9.
 47. Ge W, Ma L, Wang J, Du Y. The investigation of midwife professionals in one province. *Chin Health Qual Manag*. 2010;17(04):28–31.
 48. Wang J. The study on core competency of midwives in Changchun. Jilin: Jilin University; 2012.
 49. Yu F, Xu W, Wang D, Ye X. Two round surveys on child healthcare staff in community health centres, Xiaoshan district. Hangzhou *Chin J Prev Vet Med*. 2015;16(12):978–80.
 50. He Y, Gao C. The current status of maternal and child health workers in townships, Jiangsu. *Jiangsu Healthcare Admin*. 1997;06:57–9.
 51. Liao W. Investigation and evaluation on maternal and children health care network and their working status in a certain main district of Chongqing. Chongqing: Chongqing Medical University; 2008.
 52. Lu Y, Tang J, Xue M. Research on maternal and child health workers in community health centres in Huzhou city. *Zhejiang J Prev Med*. 2013;15(10):81–2.

53. Guo L, Tao J, Zhou Z, Zhou H, Zhu X, Wang H, Xu L, Xu L. Analysis of maternal and child healthcare staff in community health centres. *Zhejiang J Prev Med*. 2015;27(11):1165–70.
54. Chen Y. A survey on maternal and child health workers in Hengshan, Hunan. *Matern Child Health J*. 1988;3(01):8–9.
55. Shen Y. Investigation of the capacity of vaccinators in rural area, Anhui province. *Chin Rural Health Serv Admin*. 1991;04:20–1.
56. Zan B, Sun Y, Ma Y, Xu L, Zheng W. Human resource status of child and adult vaccination clinics in Yinzhou District of Ningbo City. *Chin Rural Health Serv Admin*. 2016;06:716–9.
57. Liu W, Yang L, Liu X, Bai L. Analysis of maternal and child health information human resources in Jilin province. *Matern Child Health J*. 2012;17:2568–70.
58. Ye J. A comprehensive analysis of female village doctors who are responsible for maternal and child health and the quality of care. *Matern Child Health J*. 1992;03:41–2.
59. Cheung NF, Zhang L, Mander R, Xu X, Wang X. Proposed continuing professional education programme for midwives in China: new mothers' and midwives' views. *Nurse Educ Today*. 2011;31(5):434–8.
60. Zhao J. Analysis of maternal and child health workforce in Xinyuan county. *Matern Child Health J*. 2007;22(01):8–9.
61. Wang VL. Training of the barefoot doctor in the People's Republic of China: from prevention to curative service. *Int J Health Serv*. 1975;5(3):475–88.
62. Li X. Survey on the present situations of the technical service of mother and infant healthcare in Chongqing city. *Chongqing: Chongqing Medical University*; 2014.
63. Ren Z, Song P, Chang X, Wang J, An L. Inequality of obstetric and gynaecological workforce distribution in China. *Int J Equity Health*. 2018;17(1):3.
64. Xue M, Tang S, Gao J. Equity analysis on the distribution of obstetrician and pediatrician in rural China. *Chin Health Res*. 2003;6(04):184–6.
65. Tao F, Huang K, Long X, Tolhurst R, Raven J. Low postnatal care rates in two rural counties in Anhui Province, China: Perceptions of key stakeholders. *Midwifery*. 2011;27(5):707–15.
66. Chen J, Ge X, Liu W. The current status of obstetric and paediatric resources in Nantong city. *Jiangsu Healthcare Admin*. 2017;28(02):17–9.
67. Hu Y, Tao J, Zhou H, Shen Y. Cross-sectional study on the obstetric service in Hangzhou. *Matern Child Health J*. 2010;25(05):589–91.
68. Ji G, Ma X, Lv L, Zhang Y. Report of delivery resources in Anhui province China. *Am J Prev Med*. 2017;23(02):82–6.
69. Zhu L, Qin M, Dong H, He L, Jin H, Du L. Investigation on current situation of obstetrical service in Shanghai city. *Matern Child Health J*. 2013;5(05):817–9.
70. Yang H, Li J, Huang H, Qin M, Qian L. Current situation and countermeasures of obstetric service in Kunming. *Matern Child Health J*. 2016;31(06):1127–30.
71. Wang X. Study on status of prenatal care and influencing factors in rural counties of Southern Xinjiang. Lanzhou: Lanzhou University; 2015.
72. Song P, Ren Z, Chang X, Liu X, An L. Inequality of Paediatric workforce distribution in China. *Int J Environ Res Public Health*. 2016;13(7):703.
73. Zou X, Yang L, Shen S, Xia X, Wang P, Xiao W, Wu Y, Qiu X. Analysis on change trend and difference of community maternal and child healthcare human resource equity in Guangzhou. *Matern Child Health J*. 2016;31(22):4612–4.
74. Chen J, Xu J, Cai Y, Liang J, Li Z. Comparison of the situation of vaccination clinics in Guangzhou city in 2009 and 2003. *J Trop Med*. 2010;10(06):727–9.
75. Jin X: A study on the supply and demand of paediatric services in E'shan county. Thesis. Yunnan University; 2016
76. Zhang Y, Huang L, Zhou X, Zhang X, Ke Z, Wang Z, Chen Q, Dong X, Du L, Fang J, et al. Characteristics and Workload of Pediatricians in China. *Pediatrics*. 2019;144(1):e20183532–e20183532.
77. Hu Y, Shen L, Guo J, Xie S. Public health workers and vaccination coverage in eastern China: a health economic analysis. *Int J Environ Res Public Health*. 2014;11(5):5555–66.
78. Wang H, Gusmano MK, Cao Q. An evaluation of the policy on community health organizations in China: will the priority of new healthcare reform in China be a success? *Health Policy*. 2011;99(1):37–43.
79. Meng Q, Yuan J, Jing L, Zhang J. Mobility of primary health care workers in China. *Hum Resour Health*. 2009;7(1):24.
80. Fang H, Eggleston K, Hanson K, Wu M. Enhancing financial protection under China's social health insurance to achieve universal health coverage. *BMJ*. 2019;365:l2378.
81. Feng XL, Guo S, Hipgrave D, Zhu J, Zhang L, Song L, Yang Q, Guo Y, Ronsmans C. China's facility-based birth strategy and neonatal mortality: a population-based epidemiological study. *Lancet*. 2011;378(9801):1493–500.
82. Supratikto G, Wirth ME, Achadi E, Cohen S, Ronsmans C. A District-based audit of the causes and circumstances of maternal deaths in South Kalimantan, Indonesia. *Bull World Health Organ*. 2002;80(3):228–34.
83. Rooney AL, Van Ostenberg PR. Licensure, accreditation, and certification: approaches to health services quality. Bethesda: Center for Human Services, Quality Assurance Project; 1999.
84. Alkhenizan A, Shaw C. Impact of accreditation on the quality of health-care services: a systematic review of the literature. *Ann Saudi Med*. 2011;31(4):407–16.
85. WHO Regional Office for Europe: Obstetricians and gynaecologists, per 100 000. https://gateway.euro.who.int/en/indicators/hlthres_131-obstetricians-and-gynaecologists-total/. Accessed 25 May 2021.
86. Hu K-j, Sun Z-z, Rui Y-j, Mi J-y, Ren M-x. Shortage of paediatricians in China. *Lancet*. 2014;383(9921):954.
87. WHO. People's Republic of China health system review. Manila: WHO Regional Office for the Western Pacific; 2015.
88. National Health Commission of the People's Republic of China. China health statistics yearbook 2020. Beijing: National Health Commission of the People's Republic of China; 2020.
89. Dawson AJ, Buchan J, Duffield C, Homer CSE, Wijewardena K. Task shifting and sharing in maternal and reproductive health in low-income countries: a narrative synthesis of current evidence. *Health Policy Plan*. 2014;29(3):396–408.
90. Castro Lopes S, Nove A, ten Hoop-Bender P, de Bernis L, Bokosi M, Moyo NT, Homer CSE. A descriptive analysis of midwifery education, regulation and association in 73 countries: the baseline for a post-2015 pathway. *Hum Resour Health*. 2016;14(1):37–37.
91. Chen LC. Striking the right balance: health workforce retention in remote and rural areas. *Bull World Health Organ*. 2010;88(5):323.

Publisher's Note

Springer Nature remains neutral with regard to jurisdictional claims in published maps and institutional affiliations.

Ready to submit your research? Choose BMC and benefit from:

- fast, convenient online submission
- thorough peer review by experienced researchers in your field
- rapid publication on acceptance
- support for research data, including large and complex data types
- gold Open Access which fosters wider collaboration and increased citations
- maximum visibility for your research: over 100M website views per year

At BMC, research is always in progress.

Learn more biomedcentral.com/submissions

